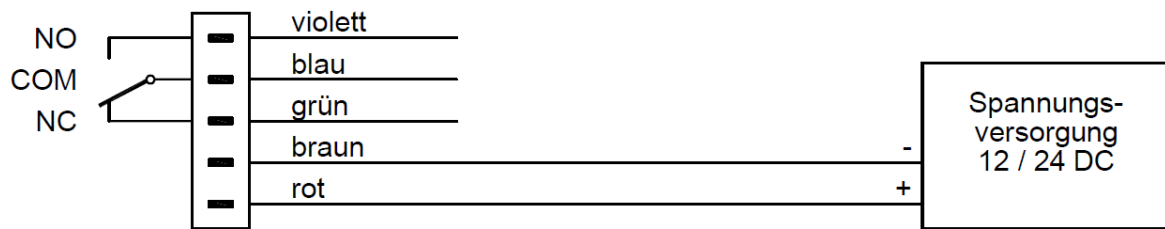


## Infrarottaster 1319-IR und 1339-IR



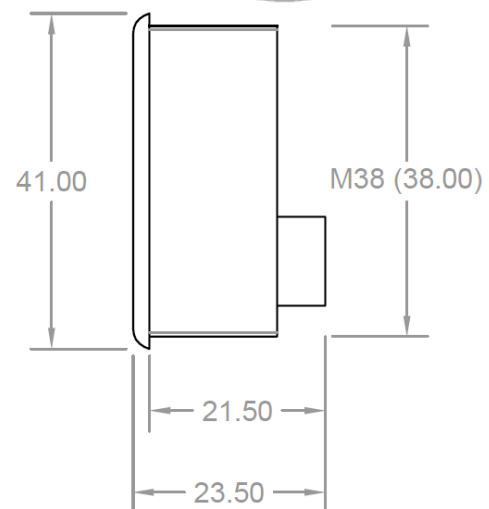
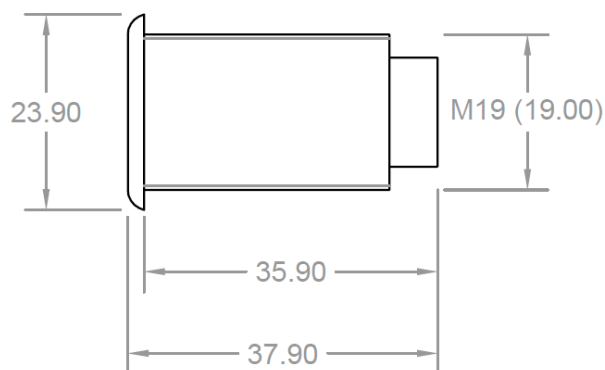
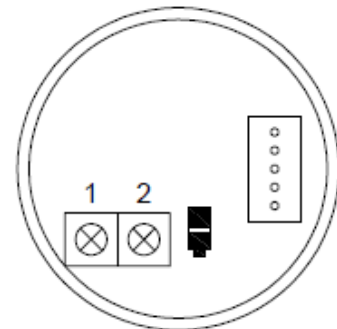
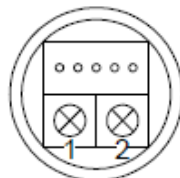
Programmierung der Schaltdistanz und der Schaltzeit

Potentiometer 1 VR1: Schaltdistanz von 3 bis 12cm.

Dipswitch (nur auf 1339-IR):  
Umschalten der Farben<sup>1</sup>

Potentiometer 2 VR2: Schaltzeit von 0.5 bis 20sec.

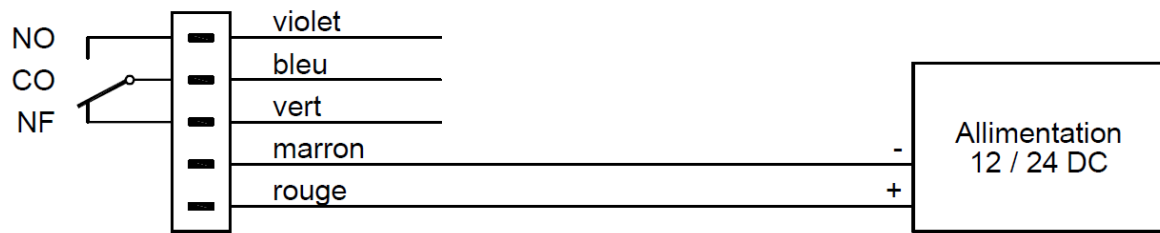
Wenn VR2 bis zum Anschlag nach links gedreht wird, funktioniert das Relais bistabil (ein / aus)



Eigenschaften

	1319-IR	1339-IR
Technologie	Kontaktloser Infrarotschalter	
Spannungsversorgung	12 / 24 VDC	
Stromaufnahme	25mA	35mA
LED Anzeige bicolore <sup>1</sup>	LED blau / grün	
Relaisausgang	Relais mit Umschaltkontakt CO / NO / NC	
Schaltleistung	30VDC / 1A	
Programmierbare Schaltdistanz	3 bis 12cm, über Potentiometer 1 einstellbar	
Programmierbare Schaltzeit	0.5 bis 20 Sekunden, über Potentiometer 2 einstell- und bistabil (ein / aus)	
IP-Schutzklasse	IP65	
Temperaturbereich	-10°C bis +70°C	
Schalterdurchmesser	19mm	38mm
Plattendicke	1mm bis 22mm	1mm bis 9mm
Einbautiefe	37.9mm	23.5mm
Abmessungen	23.9mm x 19mm x 37.9mm	41mm x 38mm x 23.5mm
Gewicht	20g	80g

## Capteurs infrarouges 1319-IR et 1339-IR



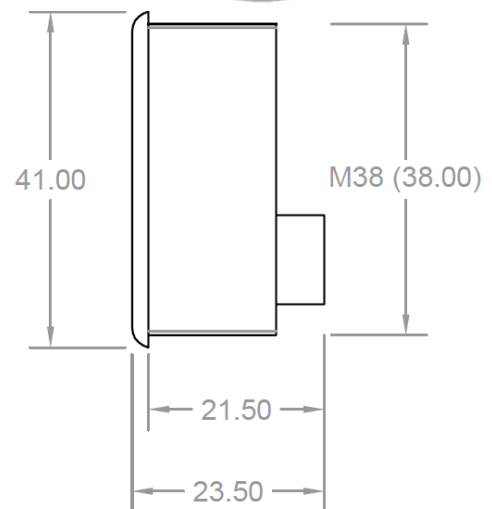
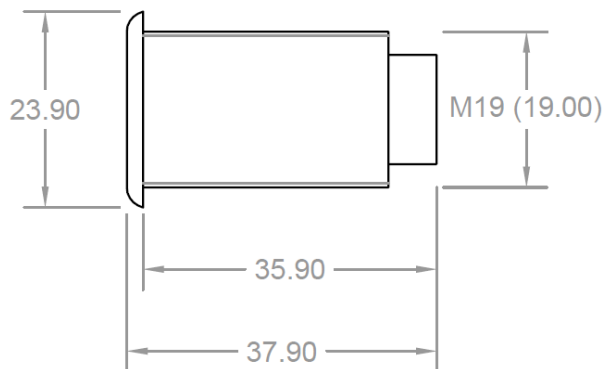
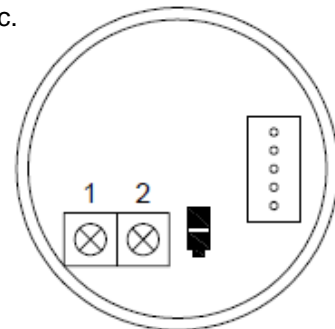
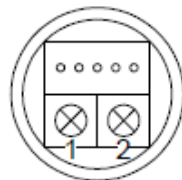
Programmation de la distance de réaction et de la temporisation du relais

Potentiomètre 1 VR1: Distance de réaction de 3 à 12cm.

Dipswitch (seulement 1339-IR):  
Changement des couleurs<sup>1</sup>

Potentiomètre 2 VR2: Temporisation du relais de 0.5 à 20sec.

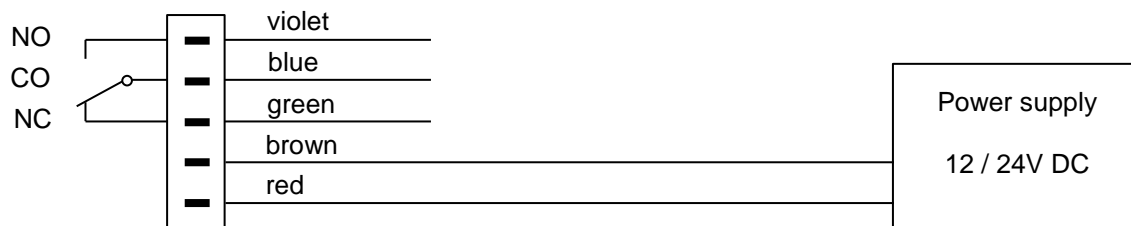
Si VR2 est à fond à gauche alors le relais fonctionne en mode bistable (ON / OFF)



Caracteristiques

	1319-IR	1339-IR
Technologie	Capteur infrarouge sans contact	
Tension d'alimentation	12 / 24 VDC	
Consommation	25mA	35mA
Indicateur lumineux à LED bicolore <sup>1</sup>	Halo lumineux sphérique LED bleue / verte	
Sortie à relais	Relais à contact inverseur CO / NC / NF	
Pouvoir de coupure max.	30VDC / 1A	
Distance de réaction programmable	De 3 à 12cm par potentiomètre	
Temporisation programmable	De 0.5 à 20 seconds par potentiomètre ou mode bistable (ON / OFF)	
Indice de protection IP	IP65	
Température de fonctionnement	-10°C à +70°C	
Diamètre de perçage pour intégration	19mm	38mm
Epaisseur panneau d'installation	1mm à 22mm	1mm à 9mm
Profondeur d'installation	37.9mm	23.5mm
Dimensions	23.9mm x 19mm x 37.9mm	41mm x 38mm x 23.5mm
Poids brut	20g	80g

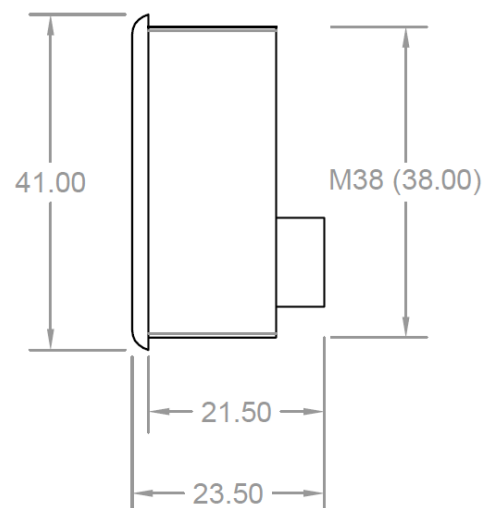
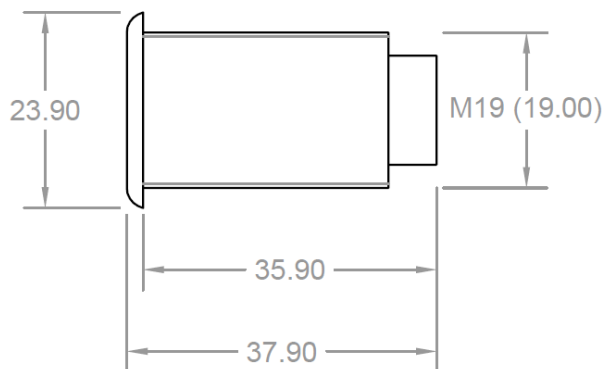
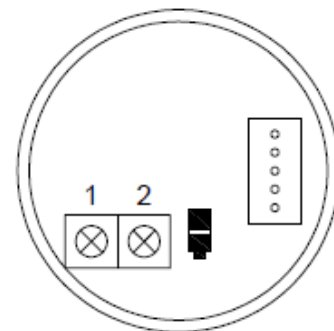
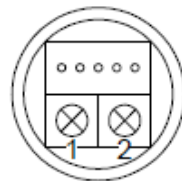
# Infrared-button 1319-IR and 1339-IR



Programming of the switching distance and of the switching time

Potentiometer 1 VR1: Switching distance from 3 up to 12cm. Dipswitch (only at 1339-IR): Change colours<sup>1</sup>

Potentiometer 2 VR2: Switching time from 0.5 up to 20sec. When VR2 is completely turned to the left, the relay is in toggle-mode (ON / OFF)



### Characteristics

	1319-IR	1339-IR
Technology	Contactless infrared-button	
Power supply	12 / 24 VDC	
Current consumption	25mA	35mA
LED display bicolour <sup>1</sup>	LED blue / green	
Relay output	Relay with changeover contact CO / NO / NC	
Switching capacity max.	30VDC / 1A	
Adjustable switching distance	3 up to 12cm, adjustable with the potentiometer 1	
Adjustable switching time	0.5 up to 20 seconds or toggle-mode (ON/OFF), adjustable with the potentiometer 2	
IP-protection class	IP65	
Temperature range	-10°C up to +70°C	
Switching diameter	19mm	38mm
Wall thickness	1mm up to 22mm	1mm up to 9mm
Mounting depth	37.9mm	23.5mm
Dimensions	23.9mm x 19mm x 37.9mm	41mm x 38mm x 23.5mm
Weight	20g	80g